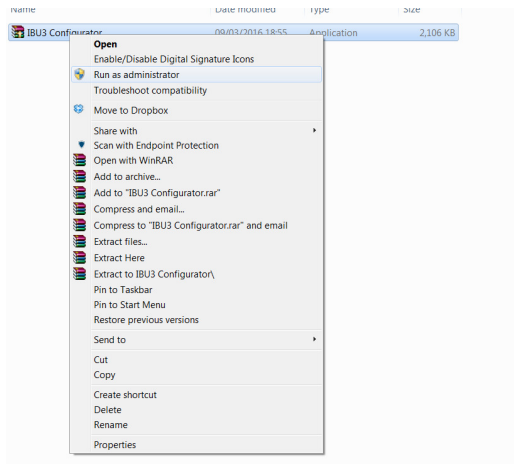


# IBU3 & PC Configuration software quick start guide.

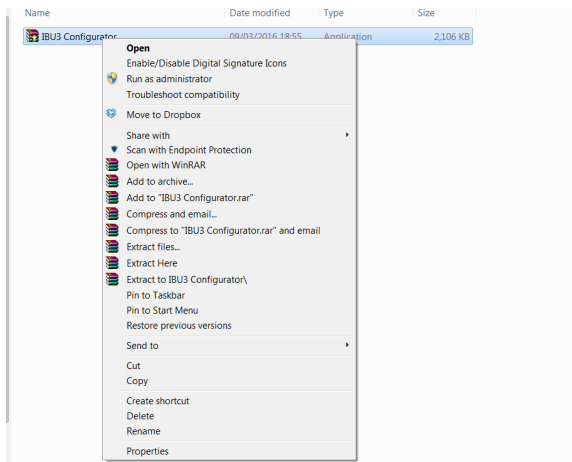
First download the PC Configuration software and drivers zip folder

<http://www.rctankelectronics.com/ibu3.html>

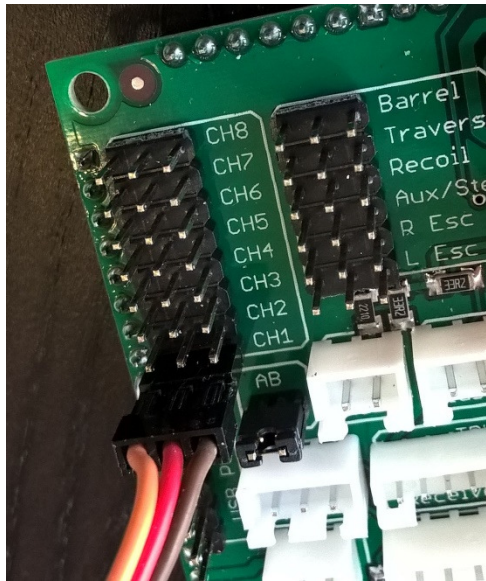
Run the IBU3 Configurator.exe by highlighting the application, right click mouse and “Run as Administrator”. Follow the on screen prompts.



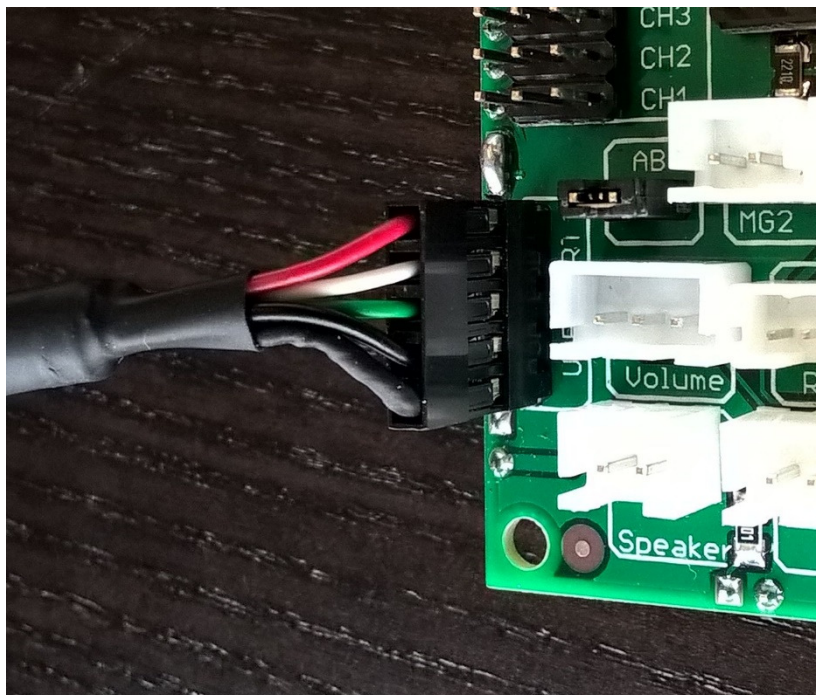
Next to install the USB drivers. Two driver packages are included but in most instances only “driversSTM32\_virtualcom” is used. Open the zip folder “driversSTM32\_virtualcom” and run the setup.exe by highlighting, right click mouse and “Run as Adminstaror”



Install the IBU3 into your tank, connect the servo leads between the IBU3 and receiver (Signal wire towards outside of the board). Note the servo leads can be connected in any order between IBU3 and receiver, as the software sorts them out during setup.



Connect the provided short USB Socket lead to the IBU3



Now connect the provided USB to USB lead to the computer and the IBU3 USB socket.

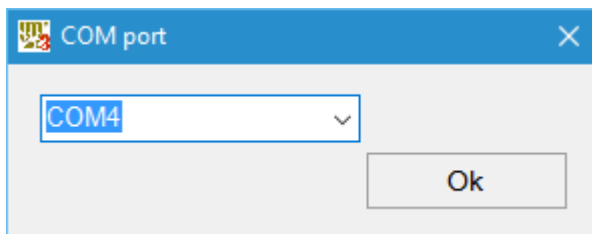
Turn on the tank

Open the IBU3 Configuration software on computer

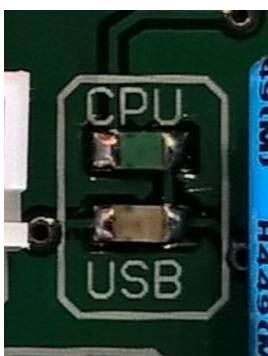


Select language (flag button)

Then select computer Com port (USB drive button)



Check the IBU3 LED indicators



Yellow should be lit to confirm USB connection

On the computer click the setup button



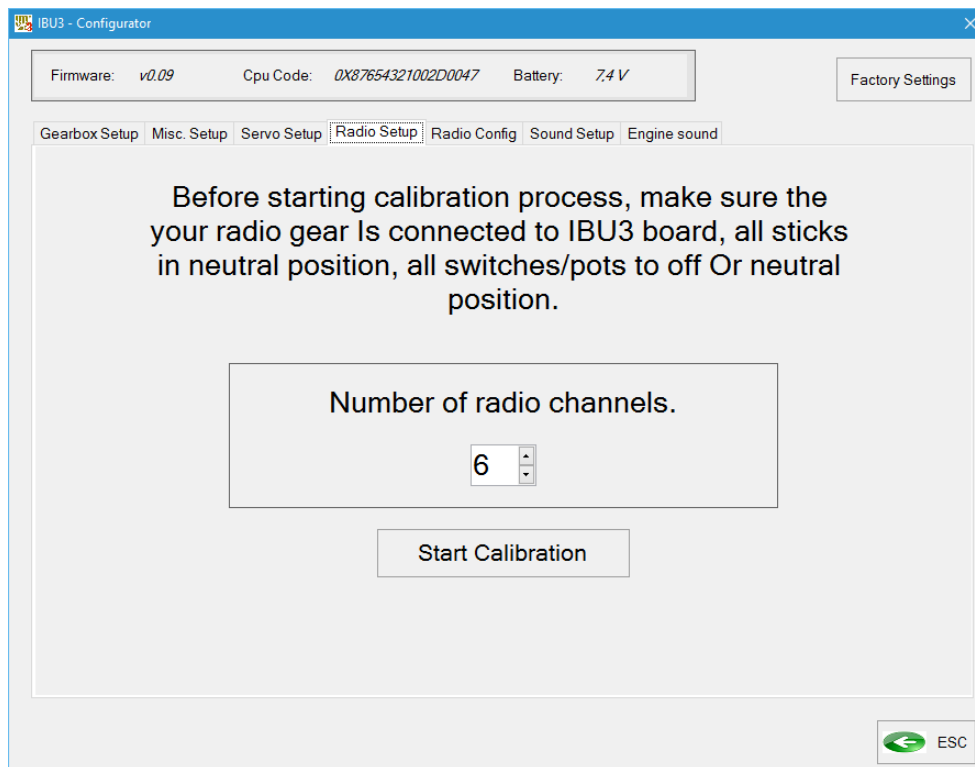
Now you should have access to the IBU3. If the software returns back to the main screen it is not communicating with the IBU3.

If not check.

- You've selected the correct COM port
- The IBU3 is turned ON
- USB leads connected properly
- If all the above are correct then the computer may need the other USB driver. Go back and install the other driver (unplug USB lead before hand)

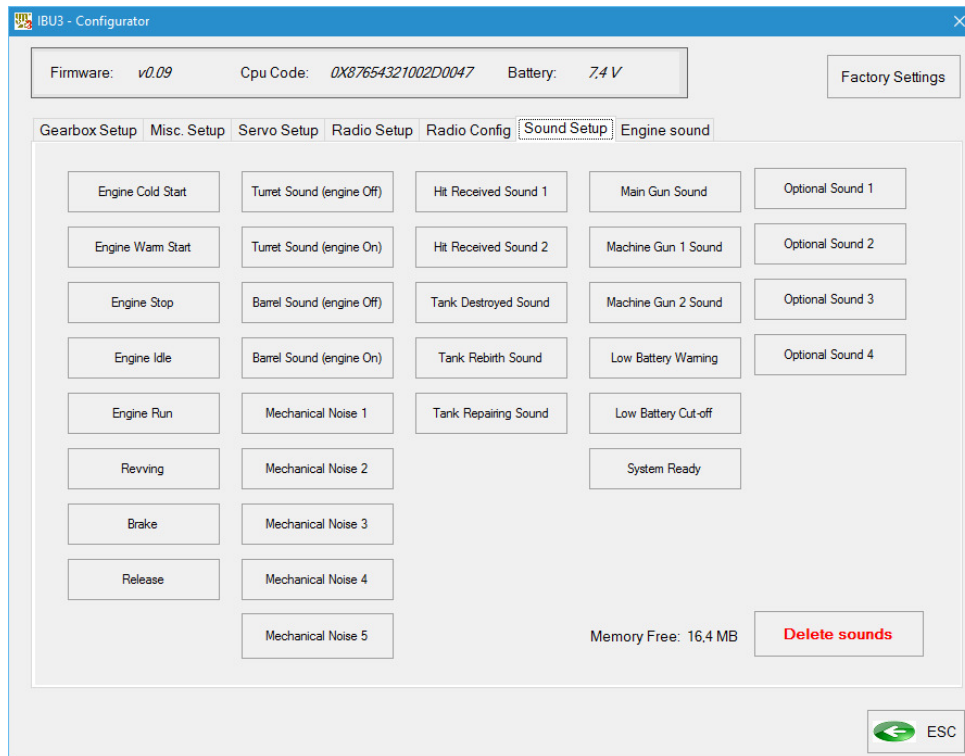
When connected, configure the radio to the IBU3

First screen should be "Radio Setup" page. Follow the onscreen commands.



Load you sounds

Go to "Sound Setup" tab



Add sounds to each action. Sounds can be downloaded here

<http://www.rctankelectronics.com/ibu3.html>

Now you can either adjust other settings by selecting the required tab or can disconnect IBU3 from computer and give the tank a test drive.

More detailed information can be found in the manual here

[http://www.rctankelectronics.com/uploads/2/4/7/1/24711568/ibu3\\_manual\\_english\\_v1.pdf](http://www.rctankelectronics.com/uploads/2/4/7/1/24711568/ibu3_manual_english_v1.pdf)